



GAT MONTHLY MEMBERSHIP PROGRESS REPORT

Results as of: 5/31/2021

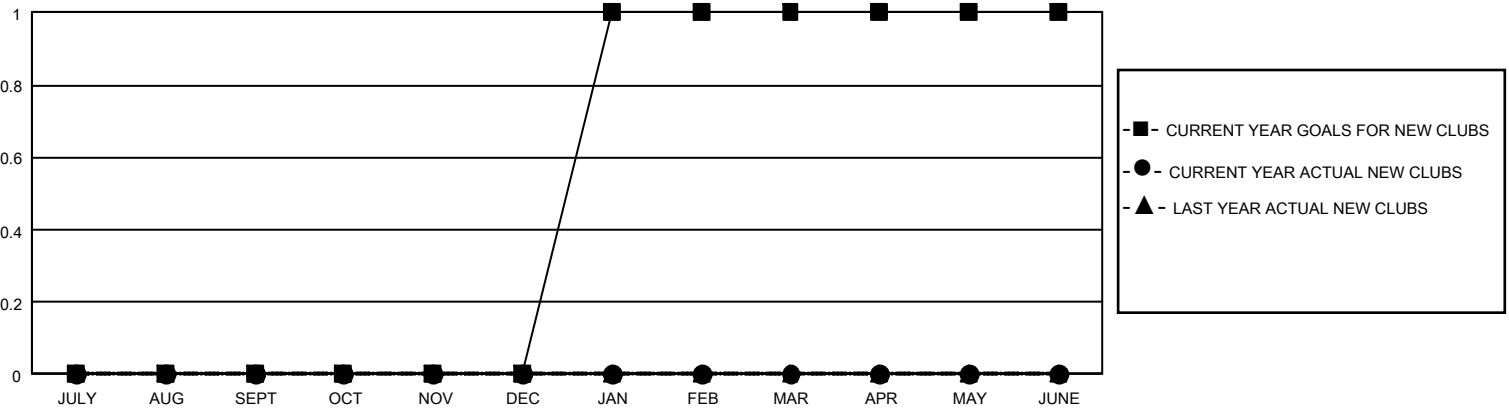
GMT Constitutional Area 3, Group I

REPORT DOES NOT INCLUDE CLUBS IN UNDISTRICTED AREAS.

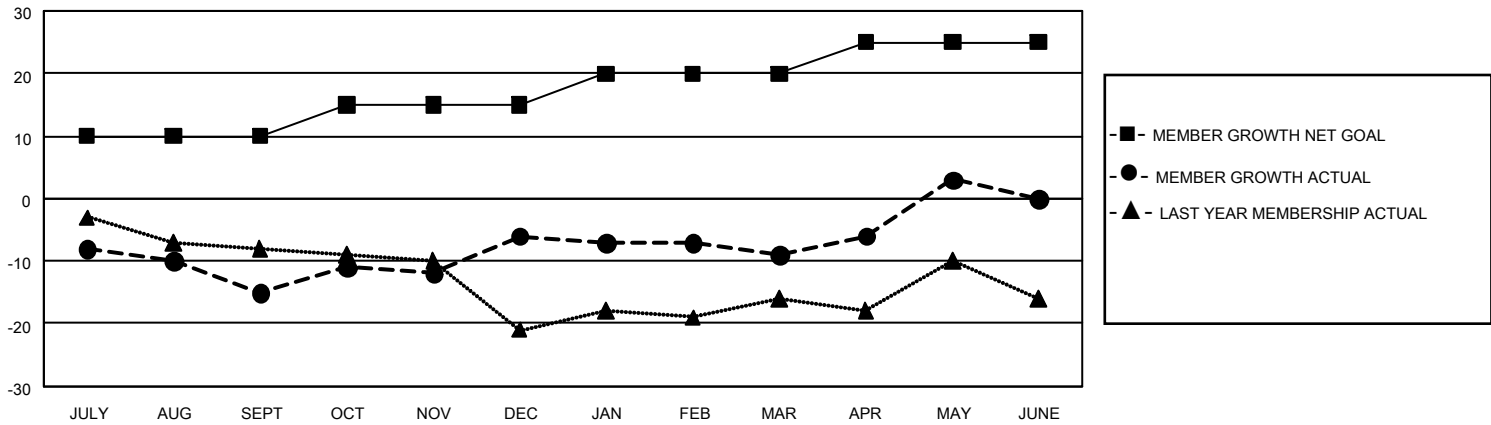
| Clubs | | | |
|-----------------------|---------------|-----------|---------------|
| RESULTS FOR 2020-2021 | | | |
| QUARTER | NEW CLUB GOAL | NEW CLUBS | DROPPED CLUBS |
| JULY/AUG/SEPT | 0 | 0 | 0 |
| OCT/NOV/DEC | 0 | 0 | 0 |
| JAN/FEB/MAR | 3 | 0 | 0 |
| APR/MAY/JUNE | 0 | 0 | 0 |

| Members | | | |
|-----------------------|------------------------|----------------------|--|
| RESULTS FOR 2020-2021 | | | |
| QUARTER | MEMBER GROWTH NET GOAL | MEMBER GROWTH ACTUAL | DROPPED MEMBERS ACTUAL (including transfers) |
| JULY/AUG/SEPT | 10 | 5 | 19 |
| OCT/NOV/DEC | 5 | 14 | 4 |
| JAN/FEB/MAR | 5 | 11 | 14 |
| APR/MAY/JUNE | 5 | 25 | 13 |

GOALS AND ACTUAL NEW CLUBS CUMULATIVE



GOALS AND ACTUAL MEMBERS CUMULATIVE



| | | |
|--|---|--|
| DROPPED CLUBS: 0 | 18 CLUBS OF 36 ADDED 1 OR MORE NEW MEMBERS | GENDER DISTRIBUTION MALE 291 (45.05%) FEMALE 355 (54.95%) |
| DROPPED MEMBERS DECEASED 8 CLUB CANCELLED 0 OTHER 42 TOTAL 50 | CLICK HERE FOR CUMULATIVE MEMBERSHIP DATA | TOTAL FAMILY UNIT MEMBERS 16 FAMILY MEMBERS PAYING HALF DUES 8 |